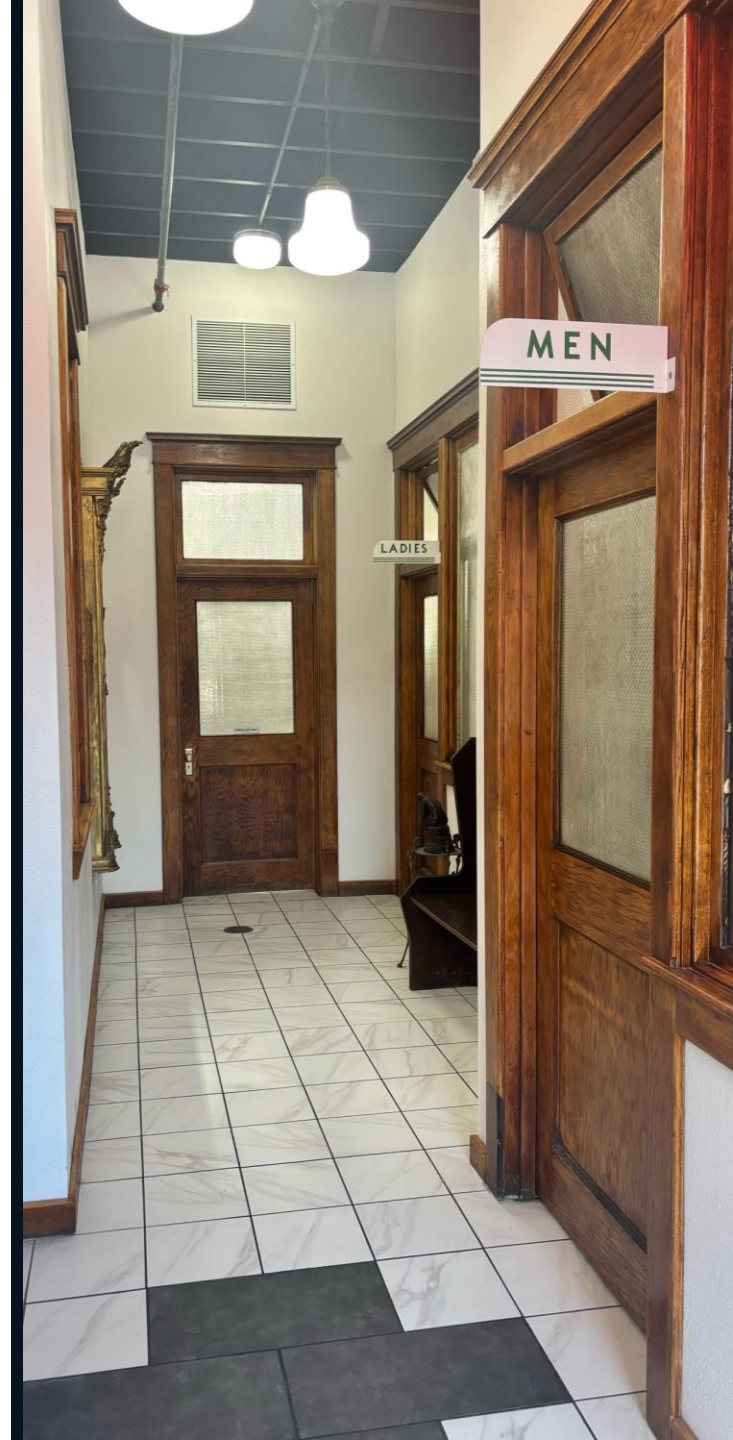


## BATHROOM BLVD



The restroom doors and windows were salvaged from Clinton's Strand theatre. The use of solid wood and quality hardware means these doors and windows will outlive us all. The windows above the doors are called transom windows and are fully functional. Transom windows were originally used as a way to heat and cool the home at a time when heating and especially air conditioning were either not yet used or considered luxuries. These windows also allowed extra light into the home/room. You'll notice the glass on the windows is not completely smooth. This is because glass is actually a very, very slow moving liquid and in old vertical pieces some settling has occurred. Since this is a commercial building no candle burning is allowed, so you might want to remain a #1 customer, if you know what I mean!

This is the hallway which takes you to the men's and women's rooms. But don't underestimate the journey. Think of it as climbing Mt Everest. Yes, the end goal has omni-importance (to both you and your kidneys) but view along the way is worth a gander. In case of emergency, remember: You can do your viewing on the return trip!



# BATHROOM BLVD



The neon arrow sign is a relic. Creating a neon sign is an art mastered by only a few in their heyday, and by an ever-shrinking number of people today. In most cases they have given way to LED lighting, which is sometimes manipulated to resemble neon. In its time, nothing signified the electronic age like these brightly lit signs. Our antique sign points the way to the restrooms, with viewable along the way.

Ful Disclosure!! The signs are reproduction because the originals were not legible to read. We didn't want you to have to guess which bathroom to go in to now would we?





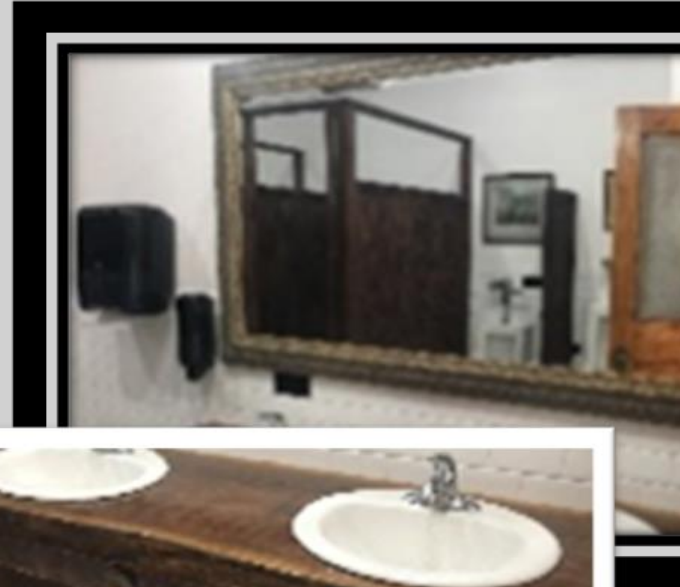
# BATHROOM BLVD

You'll know you're lookin' good because you'll be able to check yourself out in the hall of mirrors. The oversized full-length mirror with angel face shows the whole enchilada, while the smaller views show your cara y cabello. All the mirrors are re-cycled from local home.

The church pew with oval mirror and cross-shaped clock remind us of a train station. After waiting patiently for a ride, which was inevitably late, you have just enough time for a quick touch up and a silent prayer for safe travel before riding the rails. The mirror is from a farm in Cambridge, the cross from an estate sale in Rock Island, and the pew from upstairs (not that upstairs...from the sanctuary)

# MENS BATHROOM

The saga continues in the men's room. No, not the proud accomplishments deposited here, but rather the solid wood countertop, hand crafted wooden stalls, period lighting, and significant mirrors. Come in and set a spell. The mirror over the sink is from a home in East Moline and was labelled a "big a--mirror" - so we bought it!



The Louvre has French pictures and so does our loo. These were **picked** up by the owner on a trip to Paris. "Loo" is from "gardez l'eau" meaning, "watch out for the water."

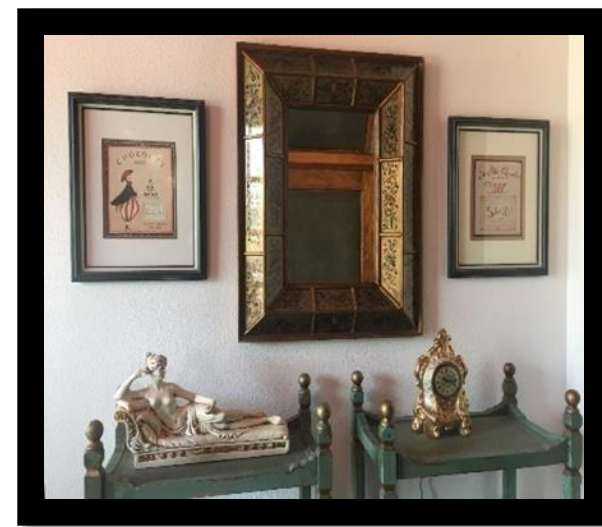


# BATHROOM BLVD

Napoleon Bonaparte's younger sister Pauline lived from 1780 – 1825. She had a voracious love life. Her first lover (when she was 13) was Louis-Marie Stanislas Freron, an engaged 39 year-old who was the deputy of the National Convention. After Napoleon broke up their relationship, she became involved with another military man named General Duphot Leonardo. When he died at the age of twenty-nine, Napoleon introduced her to another general, Victoire Emmanuel Leclerc. Pauline and he married and had one child, who died in childhood. While accompanying her husband on a mission, she again met up with Freron. Unfortunately, both he and her husband died of yellow fever. She consoled herself with relationships with several more high-profile men, all of whose careers were broken if Napoleon so desired. She had another unhappy marriage to an Italian noble, which made her a duchess. It was during this period the Venus Borghese statue was made in her likeness. Her beauty was on par with Marquise de Pompadour and Queen Marie Antoinette. It was sculpted by Antonio Canova and its depiction of Pauline as Venus was scandalous. It was commissioned by her husband who was captivated by her beauty and planned to keep the statue private. Unfortunately, the marriage ended before the statue was completed. Pauline's nude body reclining on a couch, with breasts so realistic the artist was thought to have casted her actual breasts, raised eyebrows. The statue was meant to be viewed nocturnally by candlelight with shadows accentuating the curves of her body. As this was basically nineteenth century pornography Pauline eventually asked it be removed. It was lost for centuries and ended up being used as a garden statue. Twenty years ago the heavily weathered and discolored statue was sold at a statuary auction for \$7500. After being identified as the long lost work of Antonio Canova, it was restored to its original white finish and sold at Christie's for \$10.5 million dollars. We have high hopes our fifty-year old miniature replica will follow that path



Our vintage porcelain mantel clock makes us break into song: "Tale as old as time..."



The distressed green shelves are from an antique shop in East Moline where they were used to display vintage and antique pieces. In other words, no different than their current use. Notice the French songbirds on the 3D frame of the center mirror. Along with the Parisian prints beside them, they are melodious.